

DECKED

D-CO CASES



FISHING + HUNTING

68% of our customers hunt and/or fish. They're the kind of fishermen and hunters that invest in their success, comfort, and ability to get out more. From the Rockies to the coasts and the places in between, they're conservation-minded, passing down tradition and knowledge.

DECKED



TRADES + CONSTRUCTION

Roughly 50% of DECKED customers use their truck and DECKED product for work. Whether that's construction, surveying, or excavation, they trust us to protect the tools of their trade. From oil and gas to wind and solar, DECKED runs deep in blue collar work.

DECKED



BETTER TOGETHER

Meet the D-cosystem, the definitive “Better Together” feel-good story. We make a family of products thoughtfully designed to function in an integrated manner with each other. On their own, every DECKED Drawer System, CargoGlide, and D-co Case delivers highly functional, rugged performance, but when you start combining each with other DECKED products, you are attaining full-on organizational Nirvana.

DECKED



D-CO CASES: THE ART OF STORAGE

Tough, modular, ingenious,
functional—meet the new D-co
Case line. Designed to make your
world more efficient, from your
truck to your jobsite to your
campsite or to your home.

DECKED



D-CO CASES: THE ART OF STORAGE

We've applied our manufacturing expertise to modular cases, knowing that the more organized and prepared you are, the more likely it is you will do more of the stuff you like to do. Get your gear organized for: camping, fishing, hunting, biking, hiking, cow tipping, honey-do's, road trips, prepping, and the list goes on. Ultra durable, rugged, water and dust proof.



+

SIXER 16

The Sixer is the size of a small toolbox and is a versatile must-have. Clutch Latch™ unlatches and opens/closes the case with one hand. Ideal for organizing hand tools, camp kitchen items, fishing tackle, or just about anything else that's looking for a home.



+

HALFRACK 32

Twice the size of the Sixer—offering big storage—the Halfrack comes in when you need easy access to roadside emergency items, your camp kitchen, apocalypse gear, or larger toolkits. Clutch Latch™ unlatches and opens/closes case with one hand.



+

MINUTEMAN 80 (Available late summer)

The biggest of the bunch, the Minuteman can live on top of your vehicle or in the back sealing your hunting gear, fishing gear, or other key items out of the elements. Lockable and opens smoothly with single flip Trigger Latches™. Available with Pick and Pluck foam for \$375

Cases available in Tan + Black

D-CO CASES: CONTINUED



+

D-CO HAULER 80 (available late this year)

You've got a bunch of big, weirdly shaped objects you need securely stowed, we've got just what you need—the D-co Case Hauler, Made entirely in the USA from an incredibly tough mineral reinforced polymer, it's got enough space to store the gravity of an imploding star. Clutch Latch™ unlatches and opens/closes case with one hand.

Cases available in Tan + Black



+

D-CO BIN 32 (x3)

The D-co Bin is practical stackable without all the bells and whistles. Chuck Norris-tough, unlike the usual Wally World-falls-apart junk. The D-co Bin is perfect for stowing away everything from your cook kit to grandma's precious Christmas ornaments. Comes in a pack of 3 bins.



D-CO CASES: COLORWAYS

All D-co Cases and Stacks are available in Tan or Black.



SIXER 16



HALFRACK 32



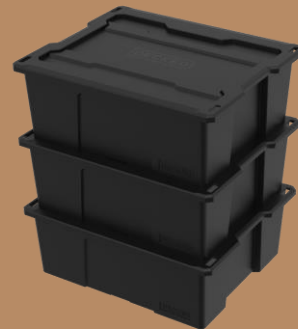
HAULER 80



D-BIN 32 (x3)



MINUTEMAN 80



D-CO LINE: KEY PRODUCT HIGHLIGHTS

1

REINFORCED MATERIALS

- Polymer mineral reinforced – the other guys just use regular old plastic

2

FASTEST LATCHES IN THE WEST

- Faster, ergonomic-er, and secure-er
- Just try 'em out

3

BETTER TOGETHER

- Quick-stacking (40-degree tip-over angle)
- Broad use case; the garage, the blind, the jobsite
- Goes wherever you do, integrates with your vehicle

D-CO CASE LINE: FEATURES

Designed to integrate perfectly with other DECKED products or offer superior standalone Tetris-fu, wherever you need to maximize your potential storage efficiency and optimize your life, D-co Cases will get you sorted. This is the rug that really ties the room together.

SUPER TOUGH, IMPACT RESISTANT
Mineral reinforced polymer construction

EASY CARRYING
Ergonomic handles and overmolded touch points

WATERPROOF AND DUSTPROOF
H2Zero gaskets

PRESSURE BALANCING GORE® VENTS
Adapts to changes in altitude/air pressure



CLUTCH LATCHES

Form follows function and convenient in-drawer opening/closing with one hand

D-QUENCE PATTERN

D-quence base patterning interlocks with other D-cosystems for secure, surefooted traction



STABLE WHEN STACKED

40-degree tip over angle

STACKABLE STABILITY

Lids and bases integrate and interlock



DECKED